

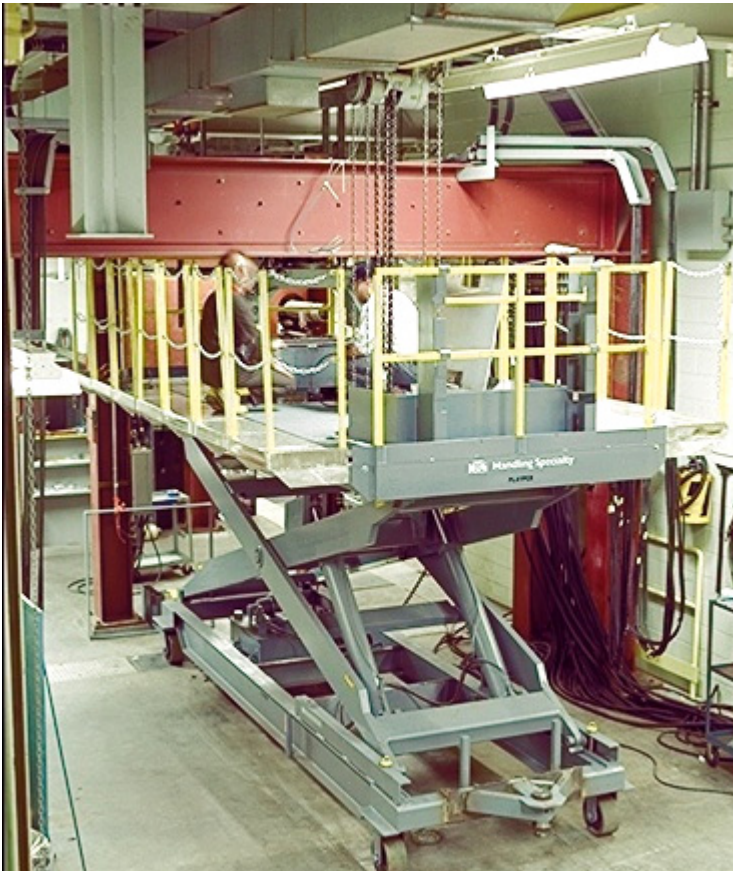


HYDRAULIC LIFT FOR NUCLEAR INDUSTRY

SPECIALTY SOLUTION #42

PROCESS INDUSTRIES

- 6,000 lb. capacity, hydraulic actuation, 82" x 204", 136" vertical travel
- 7' x 14' platform extends to 9' x 14' with aluminum extenders
- High-tolerance poly-faced wheels
- Integral power pack
- Mobile lift—can be positioned anywhere



Handling Specialty custom designed and manufactured an accurate and precise lift to replace gimbles for a nuclear energy provider in Canada. Located on the underside of a crane inside the nuclear facility, a gimble is used to replace fuel rods in the reactor.

The removal of the gimble from the underside of the overhead crane requires precise vertical and horizontal positioning. Handling Specialty designed a dual lift system with a platform large enough to accommodate plant workers. Mounted on the large lift is a smaller lift which carries the gimble.

The main lift moves the gimble from the service to the reactor area. Once the wheels are locked the main lift is raised to the final height. The second, smaller lift then locates the gimble in the "x-y" plane, lining up the bolts for mounting.